



PRODUCT ASSEMBLY INSTRUCTIONS:



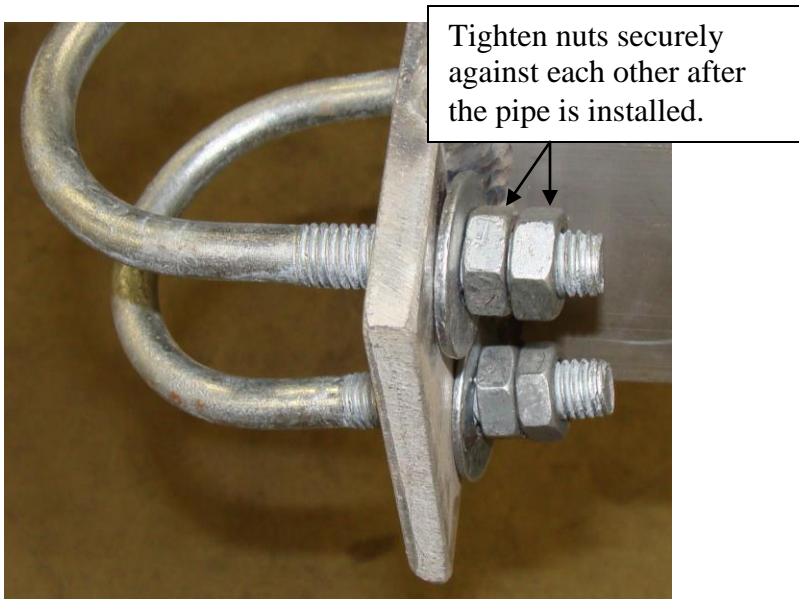
www.wavearmor.net

Item # | Product Name: 300281 300282 Wave Port to Fixed Dock (Z-bracket) Instructions

Parts List:	Tools or Hardware Needed:
1. Z-Brackets Galvanized qty 2	1. 3/4" wrench qty 2
2. U-bolts Galvanized qty 4	2. Screws or bolts to attach Z-brackets to the fixed dock (this hardware is not supplied)
3. 1/2" Galvanized Nuts qty 16	3. Anchoring pipe
4. 1/2" Galvanized Washers qty 8	4.
5.	5.

Assembly Instructions:

1. Determine where the Z-brackets will be mounted on the dock. Measure the distance from center to center of the anchoring holes at the front of the port. The Z-brackets will then be mounted to the dock this same distance apart.
2. Attach the U-bolts loosely to the Z-brackets using the washers and 2 nuts on each U-bolt. Position the PWC Port so the anchoring holes are aligned with the Z-brackets and U-bolts. Slide the anchoring pipe down through the U-bolts and through the anchoring holes. Secure pipe to the bottom of the waterway.
3. Evenly tighten the U-bolts against the anchoring pipe. Once the U-bolts are tight a second nut should be threaded onto the U-bolt as shown below. Securely tighten the nuts against each other. This will prevent the nuts and U-bolts from working loose.



4. Finished installation is shown below.

