



**PRODUCT ASSEMBLY INSTRUCTIONS:**



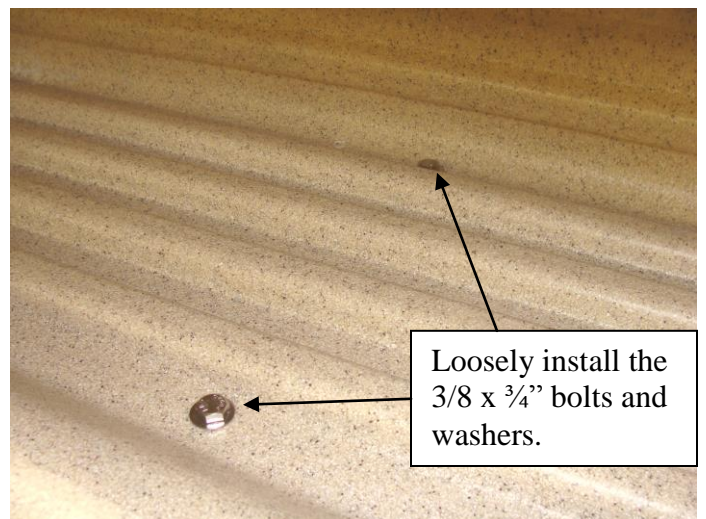
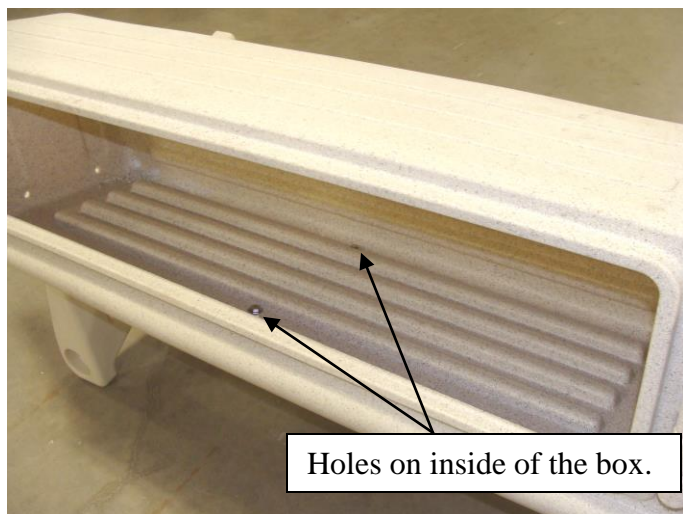
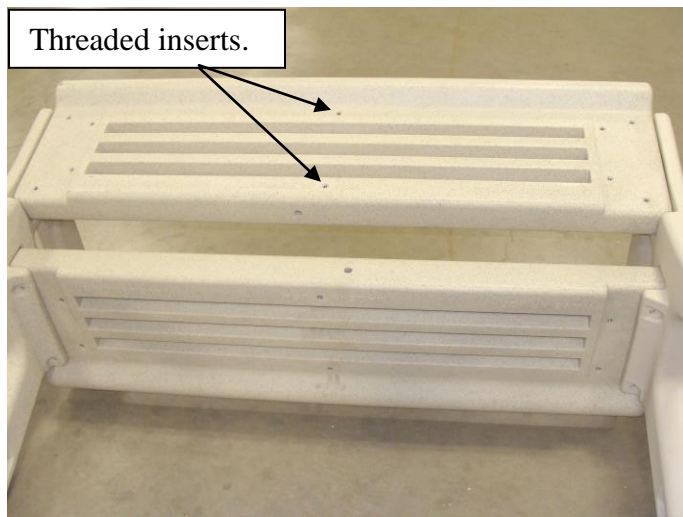
www.wavearmor.net

**Item # | Product Name:** #301093 (Pebble Beach) & 301193 (Tan) 5ft Dock Bench Box

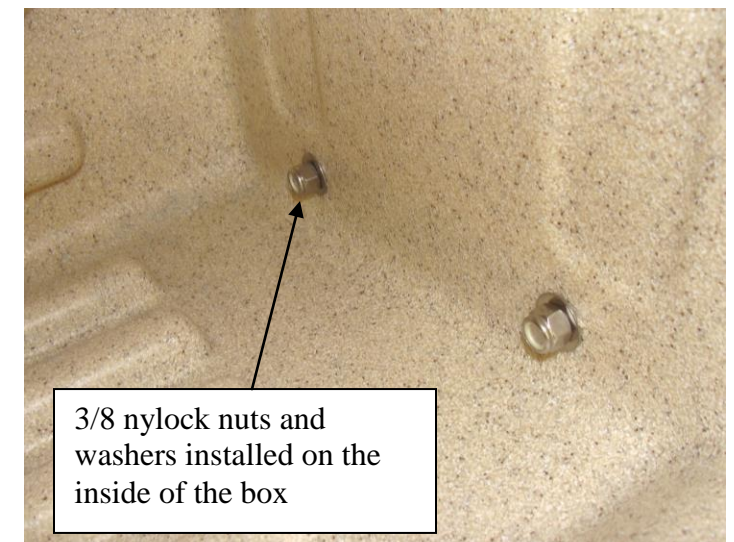
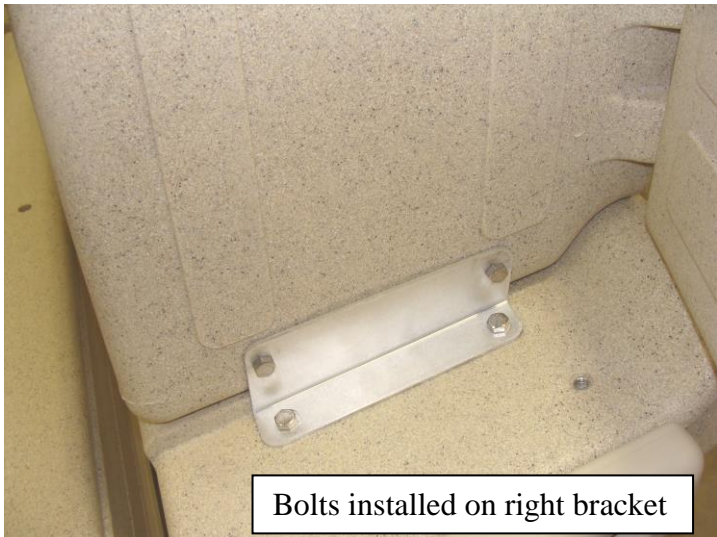
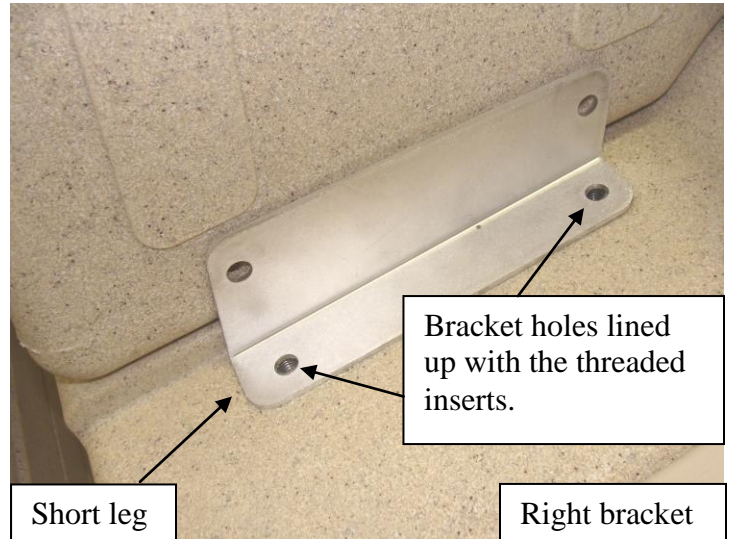
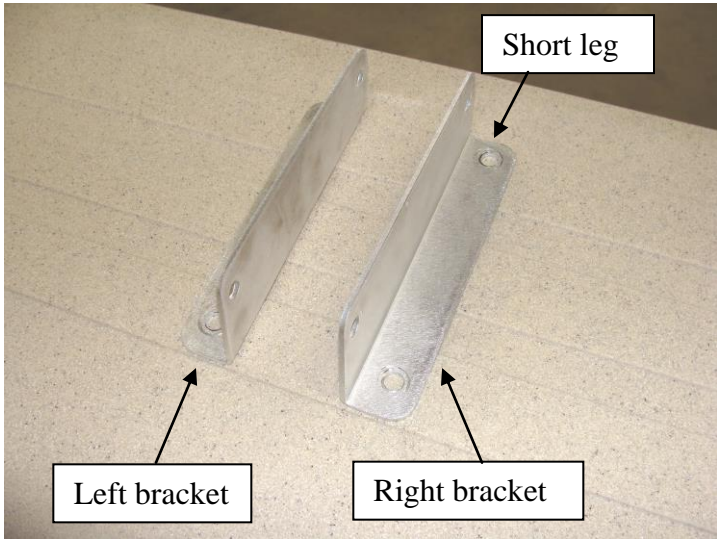
Parts List:	Tools Needed:
1. 301093 PBeach or 301193 Tan 5ft Dock Bench Box	1. 9/16" socket and ratchet
2. Hdwe Bag	2. 9/16" wrench
3.	3.
4.	4.
5.	5.

**Assembly Instructions:**

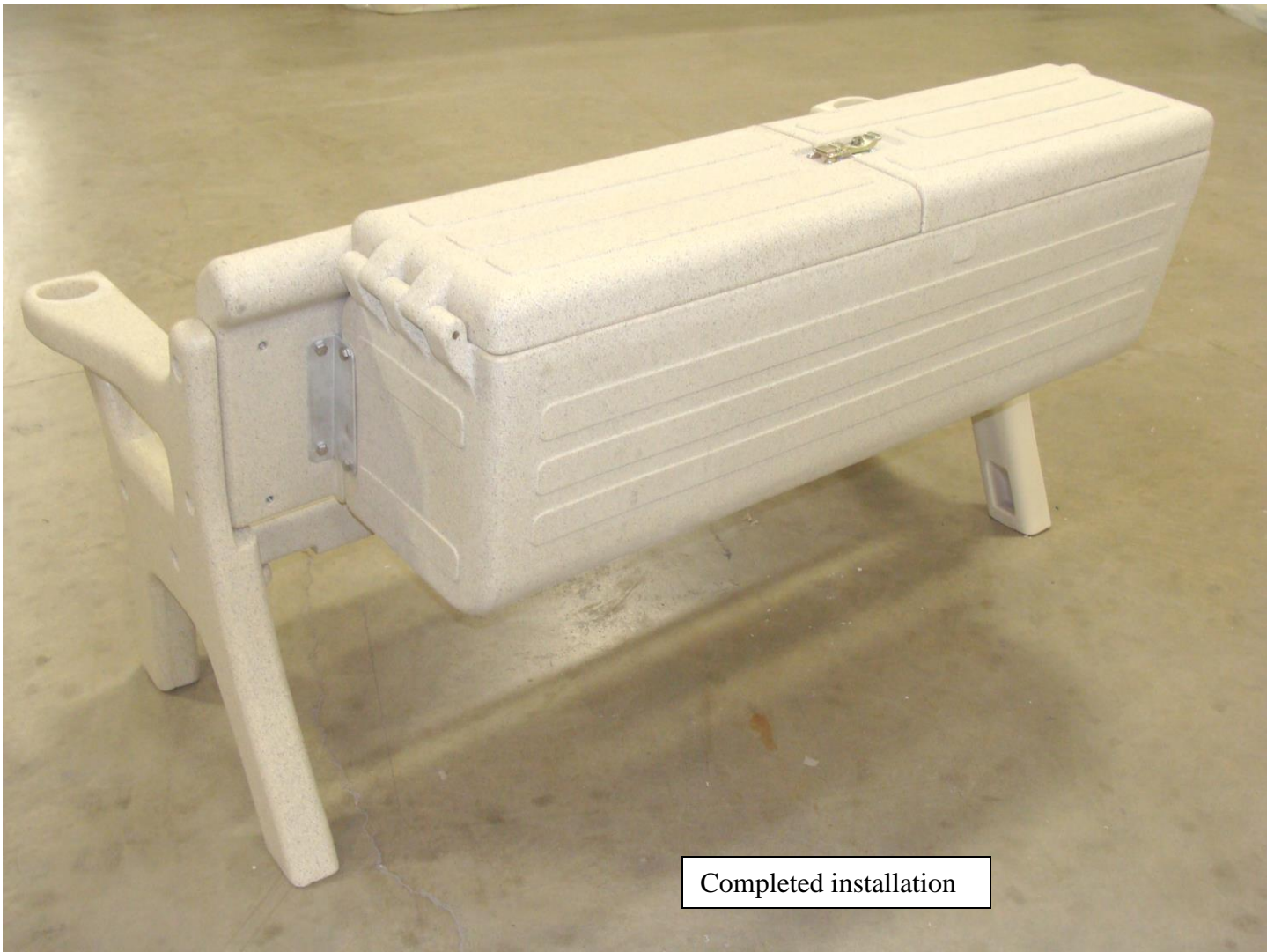
1. Tip dock bench forward so the back is facing upward as shown below. Set the bench box onto the back, lining up the two holes on the inside of the box with the threaded inserts in the back of the bench. Install the 3/8 x 3/4" bolts and washers loosely. Once all of the bolts for the box are installed they may be tightened securely.



2. Determine the right and left brackets. Line up the brackets and with the threaded inserts in the bench back and install the 3/8 x 3/4" bolts. Next, insert the 3/8 bolts through the bracket and into the box. Thread the 3/8 nylock nut and washer onto the bolt.



3. Once the box is installed and the bolts are all inserted they may then be tightened securely.



Completed installation