



PRODUCT ASSEMBLY INSTRUCTIONS:



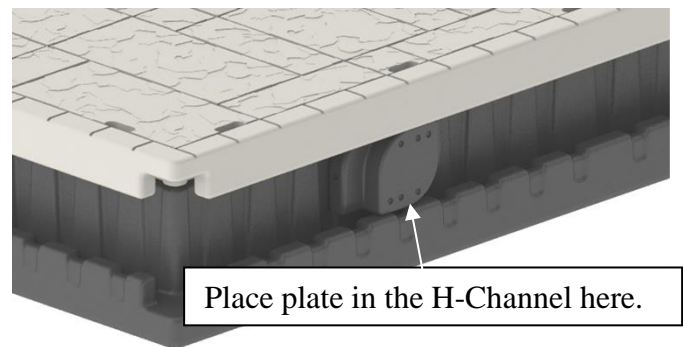
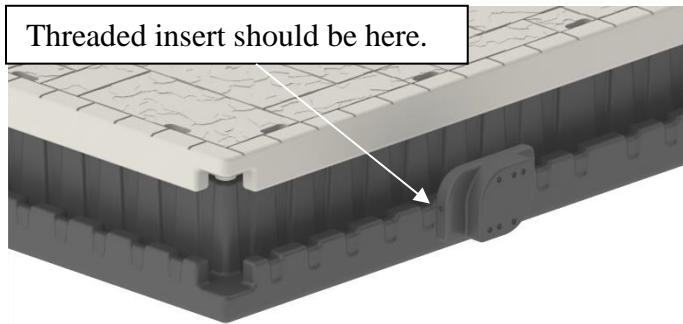
www.wavearmor.com

Item # | Product Name: 300081 Floating Dock Ladder

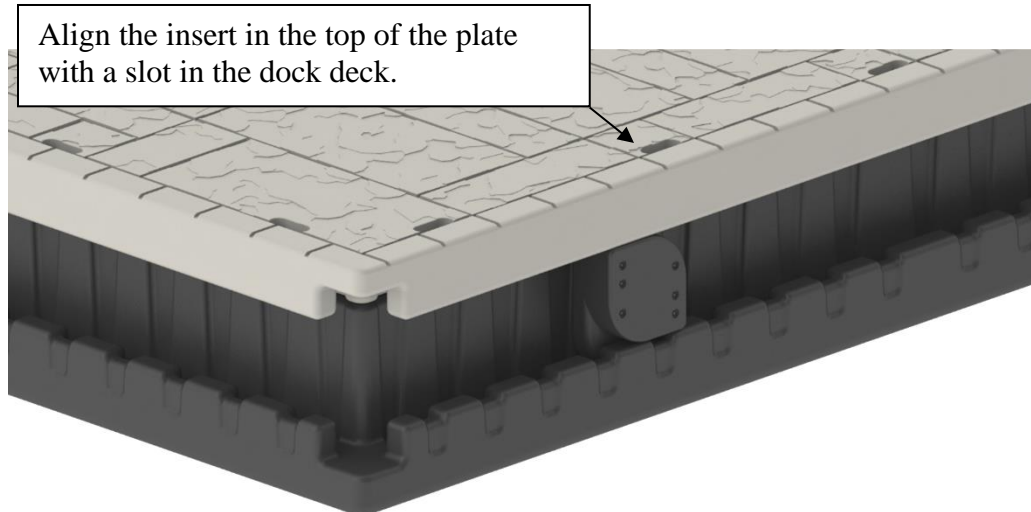
Parts List:	Tools Needed:
1. Plastic Ladder Top	1. Ratchet and 9/16" socket
2. Plastic Ladder Bottom	2.
3. Plastic Accessory Plate 7" Easy Install	3.
4. 3/8 x 2 1/2" bolt qty 2, 3/8" x 1 1/4" bolt qty 2, 3/8 x 3 3/4" bolt qty 1, 3/8" heavy washer qty 5	4.
5.	5.
6.	6.

Assembly Instructions:

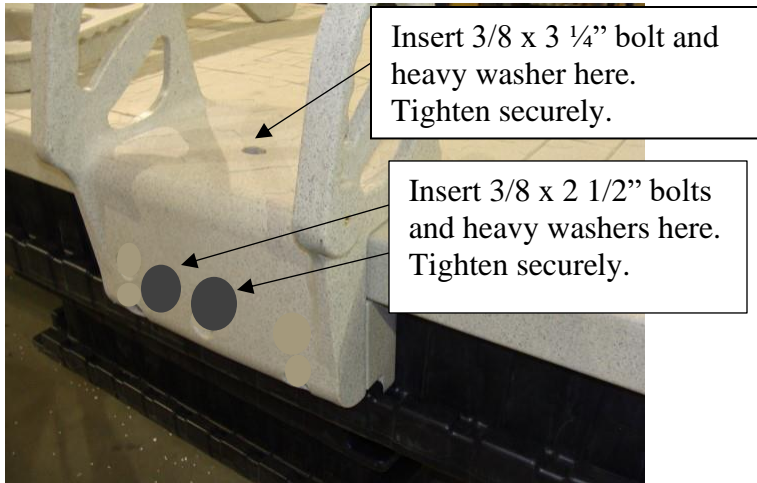
1. Position accessory plate into the H-channel of the Wave Armor dock as shown below. The threaded insert in the edge of the plate should be to the left when facing the plate.



2. Turn accessory plate **clockwise** to lock it into the H-channel on the dock. It can usually be turned by hand but two bolts may be threaded into the face to make it easier to turn. Slide plate in the channel to align the threaded insert with the slot in the dock deck.



3. Attach the ladder top to the dock and accessory plate by lining up the top hole in the ladder with the slot in the dock where the plate top insert is.



4. Attach the ladder bottom to the ladder top by lining up the two top holes on the sides of the ladder bottom with the threaded inserts in the side of the ladder top. Use the two 3/8 x 1 1/4" bolts and washers to attach the ladder bottom to the ladder top and tighten securely. The ladder is now complete and can be pivoted all the way over onto the dock.

